

SELF-CONTAINED EMERGENCY LIGHT

INSTALLATION AND OPERATING INSTRUCTIONS

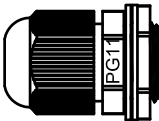
IMPORTANT

Ensure the main supply is isolated before undertaking any electrical installation of product. Check marked label for correct voltage and frequency supply before installation. Disconnect luminaires from the supply when carrying out megger testing. All installation should be carrying out in accordance with latest edition IEE regulation.

The luminaires shall, under no circumstances, be covered with insulating matting or similar material.

INSTALLATION

1. Remove diffuser from back plate.
2. Remove frame assembly from back plate.
3. Knock-out appropriate holes on back plate, Connect unit to an approved seal tight or cable gland connector before installation.
4. Mount back plate ,
5. Connect AC 220-240V power.
6. Connect battery connector.
7. Snap frame assembly to back plate.
8. Restore power and press the test button. The battery powered lamp source will light on.
9. Snap diffuser to back plate.



OPERATION

Maintained: Fixture default operation is Maintained.

Non-Maintained: Installer can change the fixture to Non maintained operation easily.

Please reference below instruction.

MONITORING

Indicator LED lamp nomally continuously on. Indicator goes out if supply or charger fails.

BATTERY

Sealed Nickel-Cadmium rechargeable battery pack.

Replace battery must be by authorized servicing personal.

The battery is recyclable.

Replace the battery when the battery no longer meets its rated duration of operation.

Please follow the enforced recycling regulations.



TEST SWITCH

A self-resetting test switch. If depress the test switch, the LED indicator light will go out and the equipment is emergency mode; If release the test switch, the LED indicator light will be illuminated and the equipment is charged mode.

UNIT FAILS TO GIVE RATED DURATION

May need cycling. If main supply and discharge is failing. Recharge for 24 hours and retest . Change battery if rated duration is not achieved.

RECOMMENDED TEST PROCEDURE

The following test is designed to ensure the continued protection of your premisesand occupants. Because of the possibility of a failure the normal lighting supply occurring shortly after a period of testing, all tests should wherever possible, be undertaken at times of least risk e.g. during daylight hours.

Monthly:

Isolate the mains supply using the emergency lighting circuit test switch for a period not exceeding a quqrter (25%) of the fitting rated duration and check fitting is illuminated.

TWICE PER YEAR:

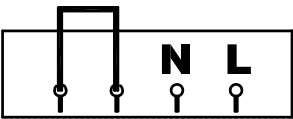
Isolate the mains supply and operate each unit for a minimum period of 1 hour. Check any units extinguishing early.

AFTER 3 YEARS AND EACH SUBSEQUENT YEAR:

Isolate the mains supply and operate each unit for full rated duration. Check any units extinguishing early.

Maintained and Non maintained operation:

Jumper cable



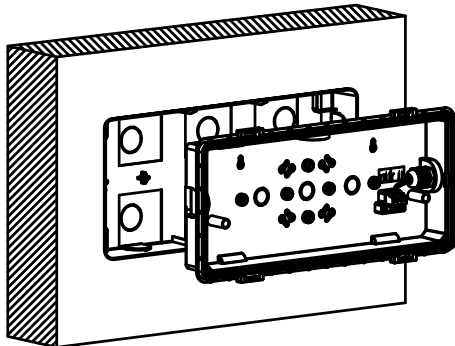
Maintained operation:

Connect L,N and leave jumper cable connected.

Non-Maintained operation:

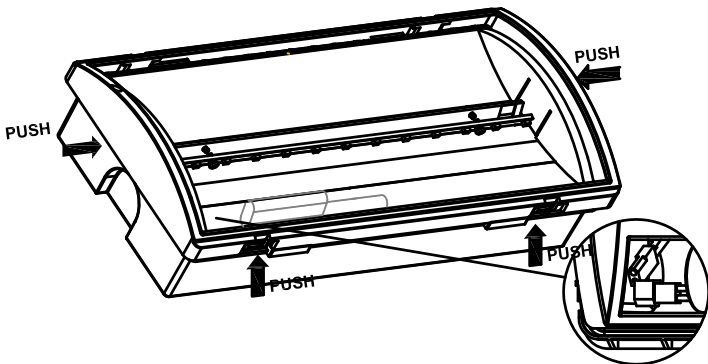
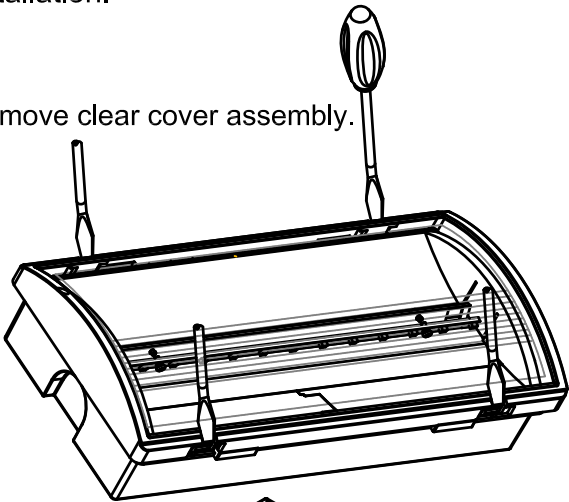
Connect L,N and remove jumper cable .

Flush mounting

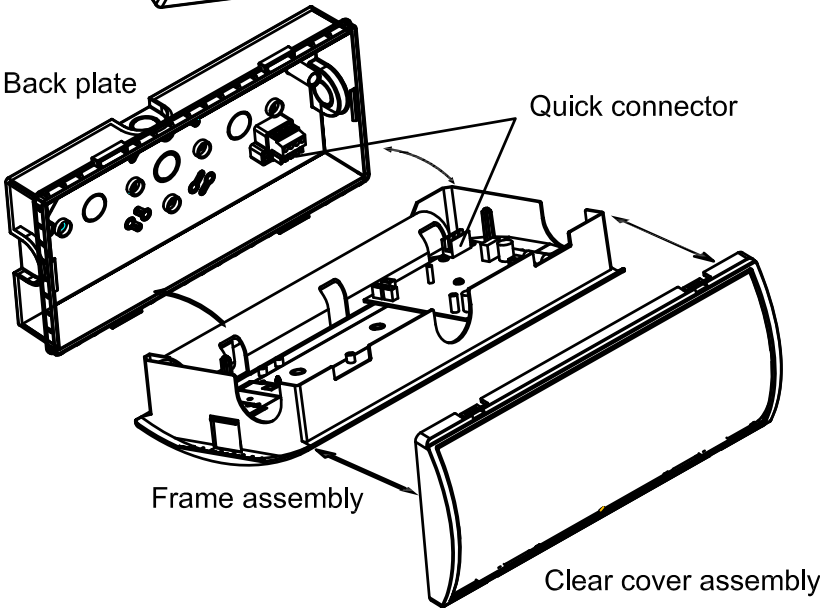


Installation:

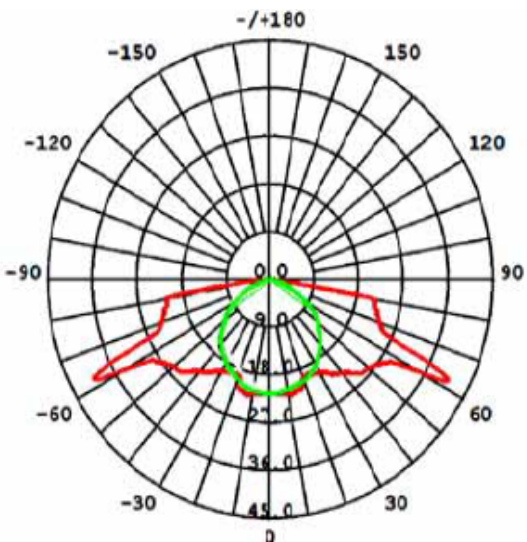
Remove clear cover assembly.



Remove frame assembly.



Photometric



Technical Characteristics Type	Duration Rated 1 hour		Duration Rated 3 hours	
Operation Mode	Maintained		Maintained	
Supply Voltage / Frequency	220-240V~ / 50Hz		220-240V~ / 50Hz	
Power Consumption	Manual test	AUTO test	Manual test	AUTO test
	5.5 W	6.0 W	5.8 W	6.5 W
Input Current	45-55 mA	48-58 mA	48-58 mA	50-65 mA
Battery	3.6V 1.0Ah,Ni-Cd battery1pc		3.6V 1.0Ah,Ni-Cd batteries 2pcs	
Charge Duration	24h		24h	
Discharge Duration	60 mins		180 mins	
Battery Protecttion	Overcharge and full discharge		Overcharge and full discharge	
Light Source	LED strip		LED strip	
Insulation Classification	Class II		Class II	
Protect Level	IP65		IP65	
Ambient Temperature	0~25 Deg. C		0~25 Deg. C	
Approval	EN-60598-1, EN-60598-2-22			
Relative Humidity	Up to 85%		Up to 85%	
Warranty	3 years		3 years	

OPERATING INSTRUCTIONS

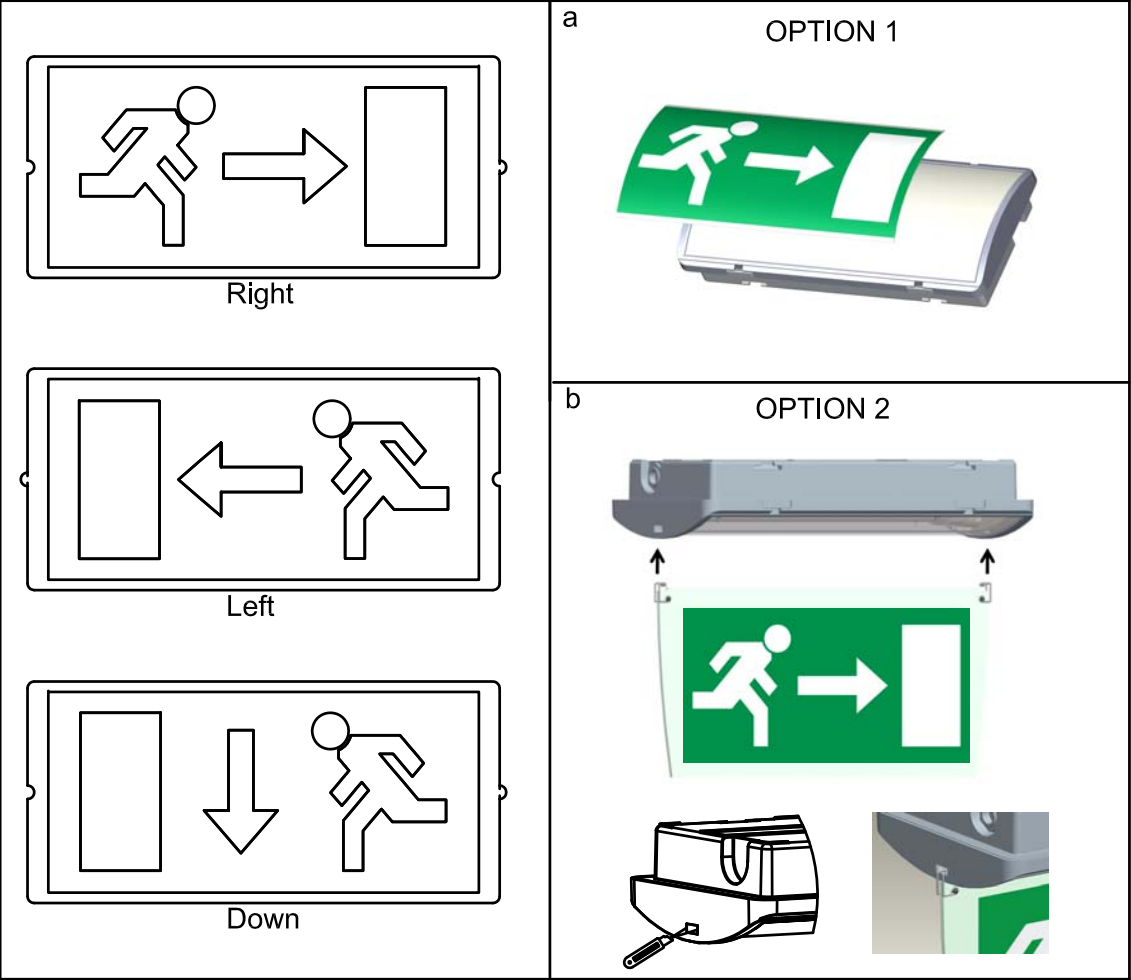
Emergency Light Converts to Exit Signs

OPTION 1

- 1. Two pictogram inserts available for arrow Right / Left / Down types.
- 2. Simply snap-in insert as below diagram a.

OPTION 2

- 1. Edge-lit exit legend available for exit sign.
- 2. Easy assembling as below diagram b.



PICTOGRAM



NEO-S PG31



NEO-S PG33



NEO-S PG41



NEO-S PG43

INSTRUCTION FOR AUTO-TEST OPTION

(SELF-DIAGNOSTICS/SELF-TEST FUNCTION)

- 1. Install LED EXIT Sign According to Installation Instruction Sheet.
- 2. As soon as AC power is supplied to fixture, the unit will automatically initiate a self-test and self-diagnostic test as follows:
  - (1) Verifies battery disconnection, charger board failure, lamps failure and transformer failure at every 4 seconds.
  - (2) 3 minutes (Duration: 3 minutes) self-testing every month after installation.
  - (3) 1H (Duration: 1 hour) or 3H (Duration: 3 hours) self-testing every year after installation.
  - (4) Factory pre-set all functions-Do not need field adjustment.

3. Dual color LED indicator shows the following status:

- (1) Green color 

ON/ Ready

Blinking: Testing
- (2) Red color (Service Alert)
- (3) Service Alert LED Code (Red color LED lamp indicator)

●	One blink ON/pause (4 seconds)	Battery is not connected
●●	Two blinks ON/pause (4 seconds)	Battery is shorted or battery voltage drops below than acceptable value
●●●	Three blinks ON/pause (4 seconds)	Charger board circuit fault
●●●●	Four blinks ON/pause (4 seconds)	Transformer fault
●●●●●	Five blinks ON/pause (4 seconds)	Lamp fault

CAUTION:

After solve the fault of emergency equipment, please press test button for 2 second without release, then LED indicator will show Green color, the equipment is charge mode.

4. For manual test, press test button as follows:

Press test button once (within 2 seconds)	30 seconds test
Press test button twice (within 2 seconds)	3 minutes test
Press test button 3 times (within 2 seconds)	30 minutes test
Press test button 4 times (within 2 seconds)	1 or 3 hour test